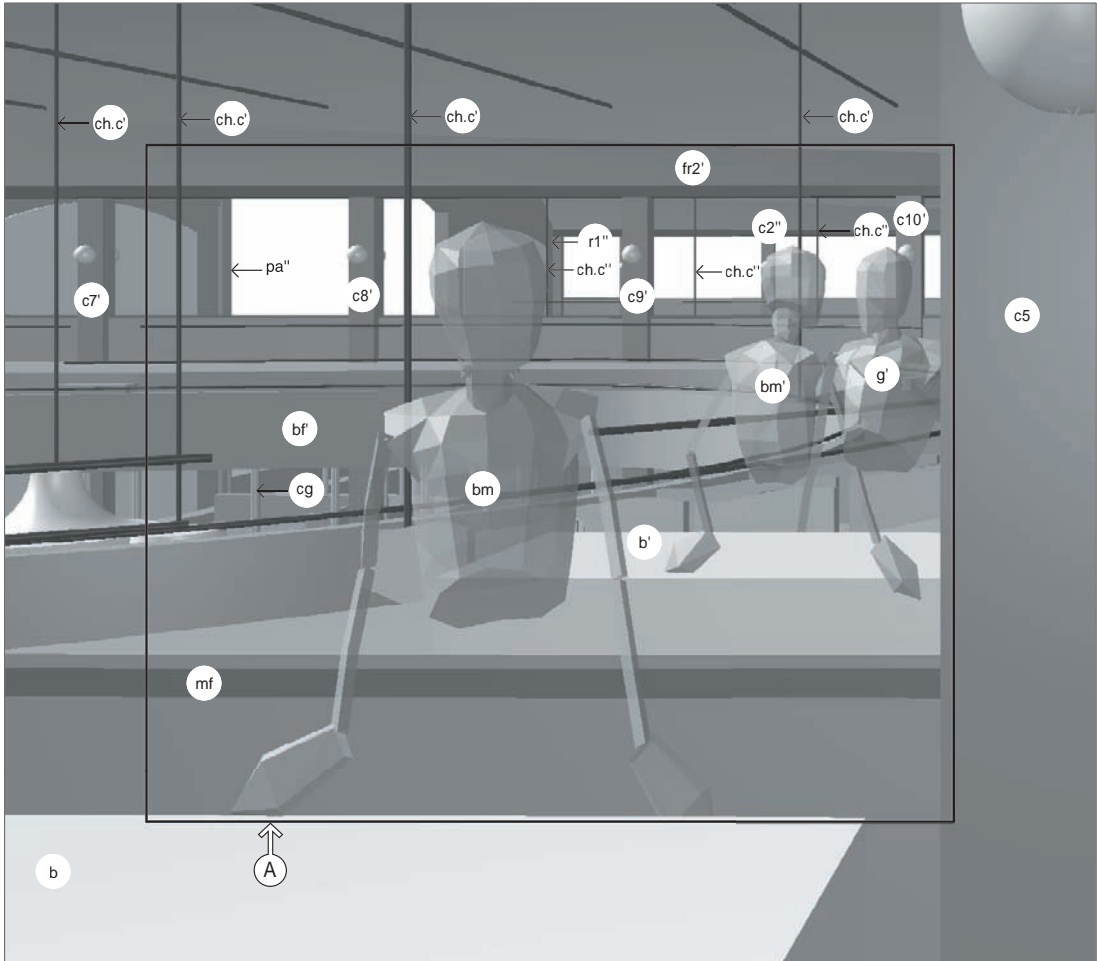


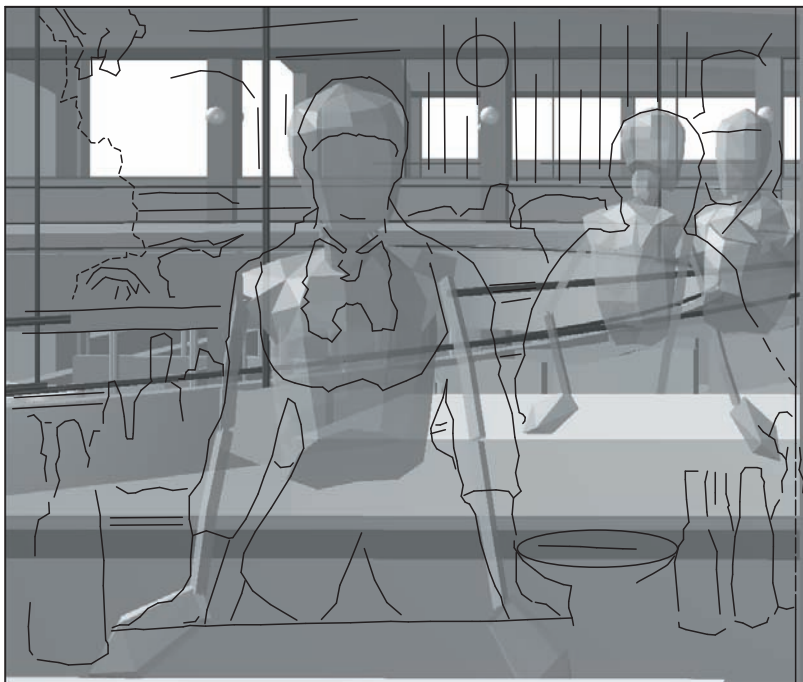
F33
 Bar in Wash Drawing, Folies-Bergère theatre:
 Plan and section – SP2.1P-offset
 © Malcolm Park

- | | |
|--------------------------------------|---|
| AS Actual space | g Gentleman |
| RS1 First-reflected space | m Mirror |
| b Bar | SP2 Viewpoint, 155cm above floor |
| bm Barmaid | CV Centre of vision |
| c Column, with attached light | av Angle of vision |
| fr Frieze | ev Extent of view |





F34
 Perspective: SP2, 1P-offset – Overlay: Wash Drawing format. © Malcolm Park



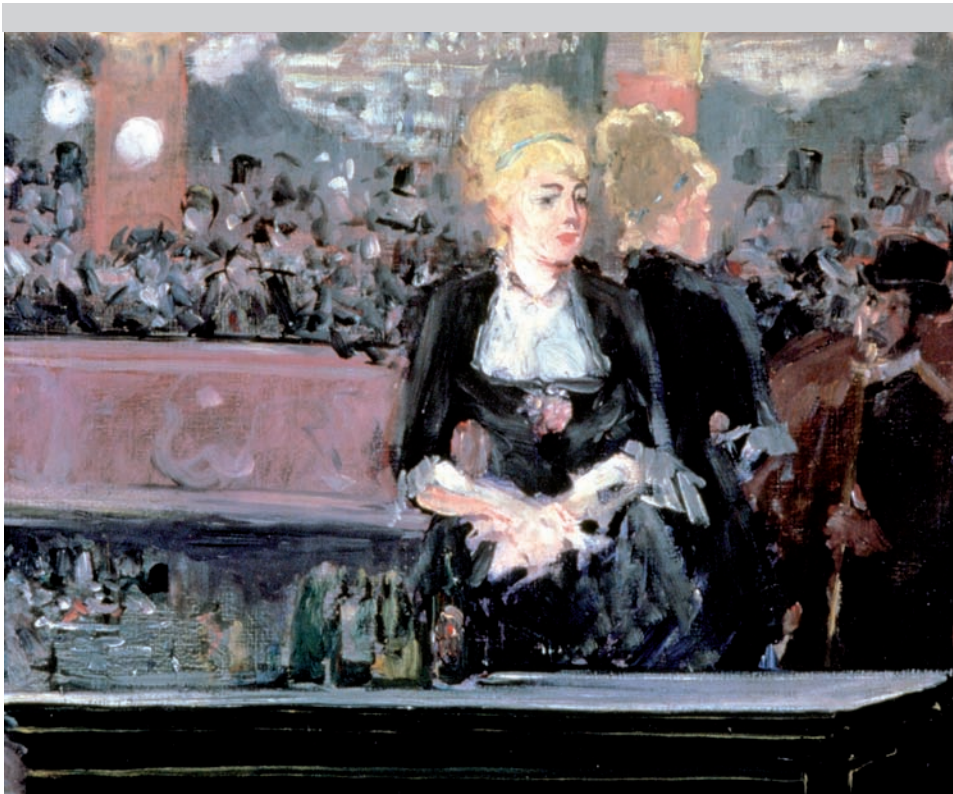
F35
 Perspective: SP2, 1P-offset – Overlay: line drawing after Wash Drawing, Fig.F32. © Malcolm Park

- b** Bar
- bf** Balcony front
- bm** Barmaid
- c** Column
- cg** Columns, ground floor level
- ch.c** Chandelier cable
- fr** Frieze
- g** Gentleman
- mf** Mirror frame
- pa** Proscenium arch
- r** Corner, front and side walls



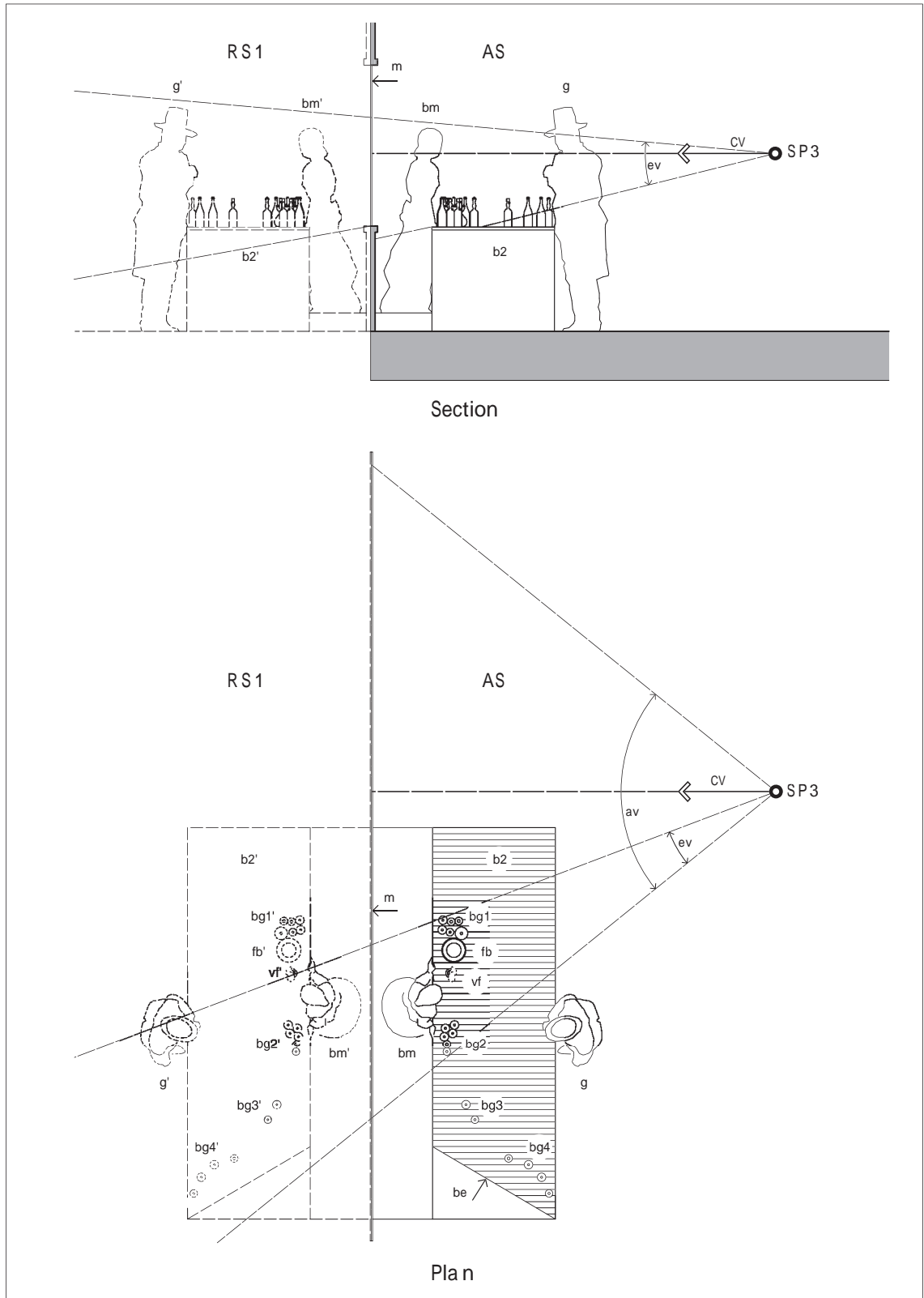
F36

Overlay line drawing after *A Bar at the Folies-Bergère* (Fig.F1). Overlay © Malcolm Park



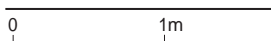
F37

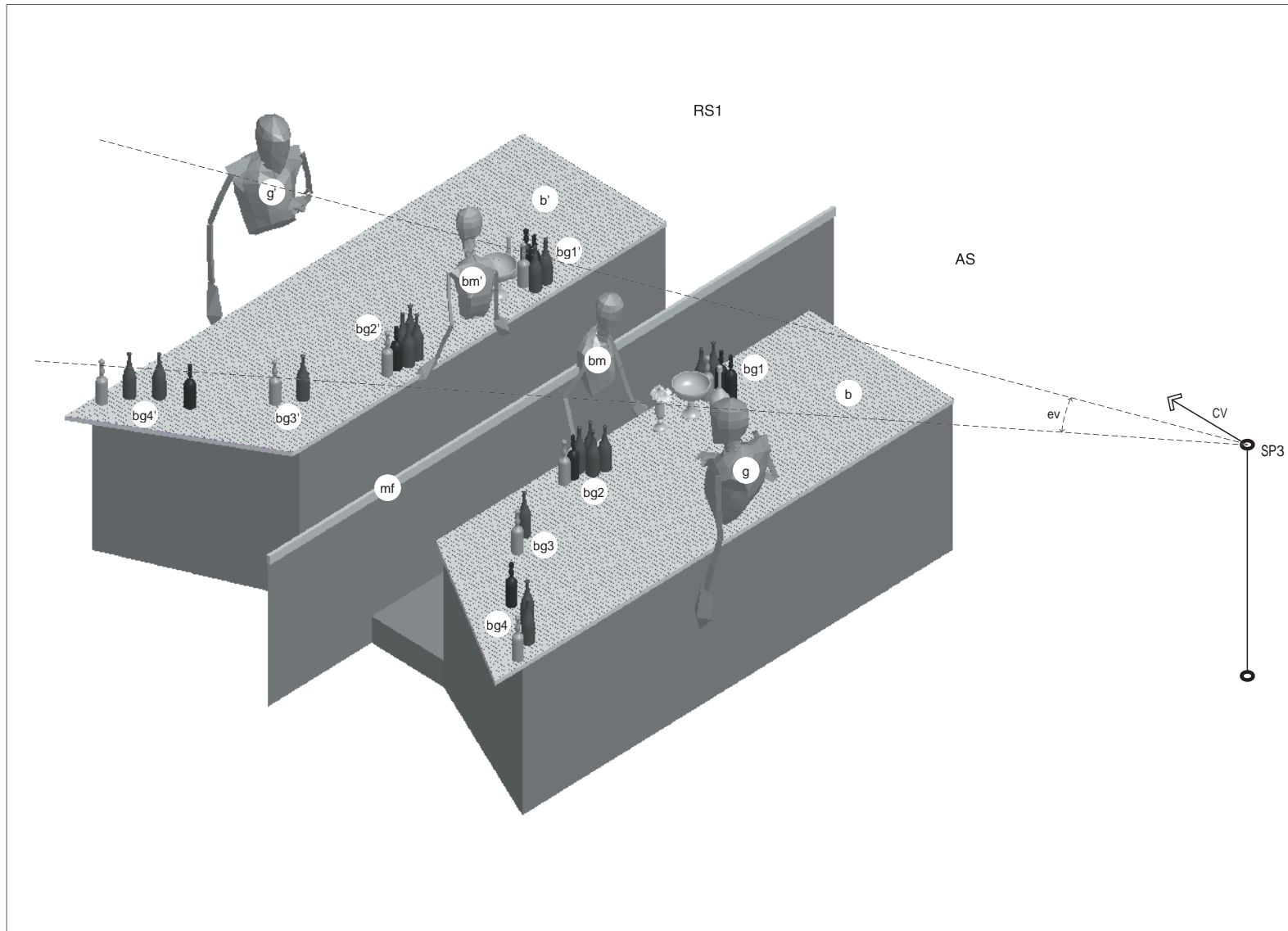
Oil Sketch for A Bar at the Folies-Bergère (Fig.F3). Cropped image, without frieze above reflected wall mirrors.
© 2013 Photo Art Media / Heritage Images / Scala, Florence.



F38
 Bar in Final Painting, Manet's studio:
 Plan and section – SP3, 1P-offset.
 © Malcolm Park

- | | |
|---|---|
| AS Actual space | vf Vase of flowers |
| RS1 First-reflected space | g Gentleman |
| b Bar | m Mirror |
| be Angled shape of bar end as required to match form in Final Painting | SP3 Viewpoint, 155cm above floor |
| bg Bottle group | CV Centre of vision |
| bm Barmaid | av Angle of vision |
| fb Fruit bowl | ev Extent of view |





- AS Actual space
- RS1 First-reflected space
- b Bar
- bg Bottle group
- bm Barmaid
- g Gentleman
- mf Mirror frame
- SP3 Viewpoint, 155cm above floor
- CV Centre of vision
- ev Extent of view

F39
 Bar in Final Painting,
 Manet's studio: Isometric view:
 actual and single-reflected spaces.
 © Malcolm Park

