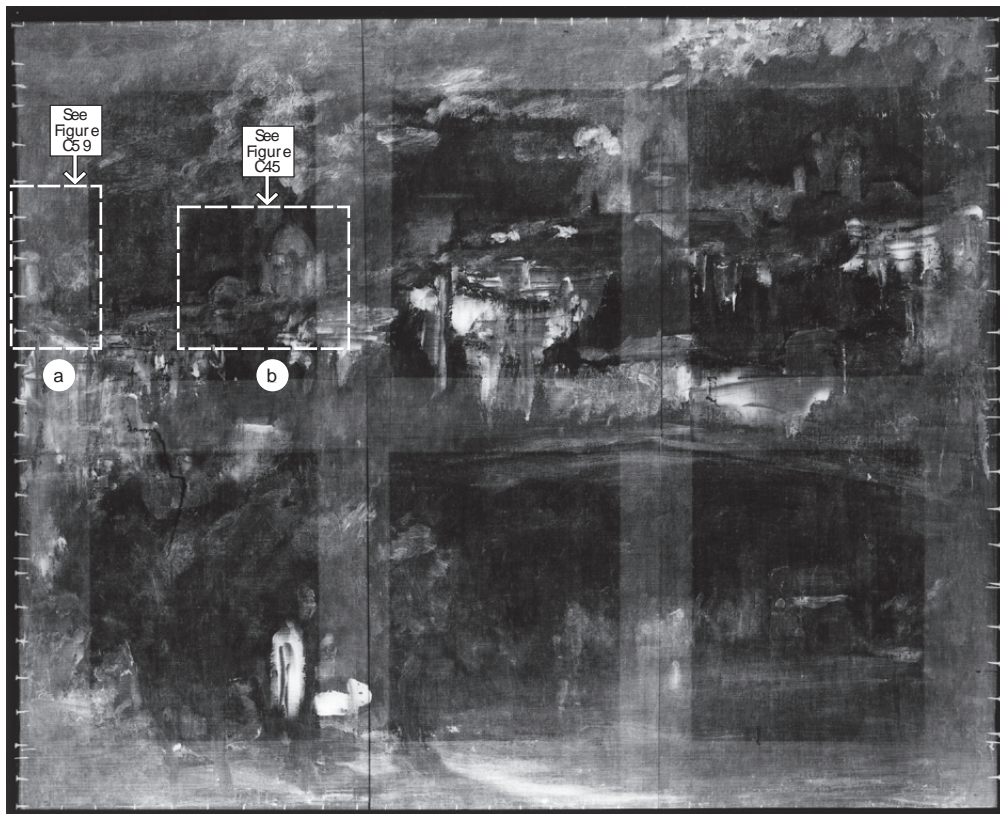




C1

Edouard Manet, *The Funeral (The Burial)*, c.1867; oil on canvas, 72.7 x 90.5 cm.
 The Metropolitan Museum of Art, New York. Catharine Lorillard Wolfe Collection, Wolfe Fund, 1909
 (Acc. no. 10.36). Image © The Metropolitan Museum of Art



C2

Positive print from composite X-radiograph of *The Funeral (The Burial)* (Fig.C1).
 The Metropolitan Museum of Art, New York.
 Image © The Metropolitan Museum of Art

- a** Form of Saint-Jacques-du-Haut-Pas within shape of tree in painting
- b** Form of facade and roof to Val-de-Grâce beneath 'dome' of Orme de Sully

[NOT REPRODUCED]
Image can be seen in the
UNSW digital dissertation copy
noted in 'Home > Introduction'

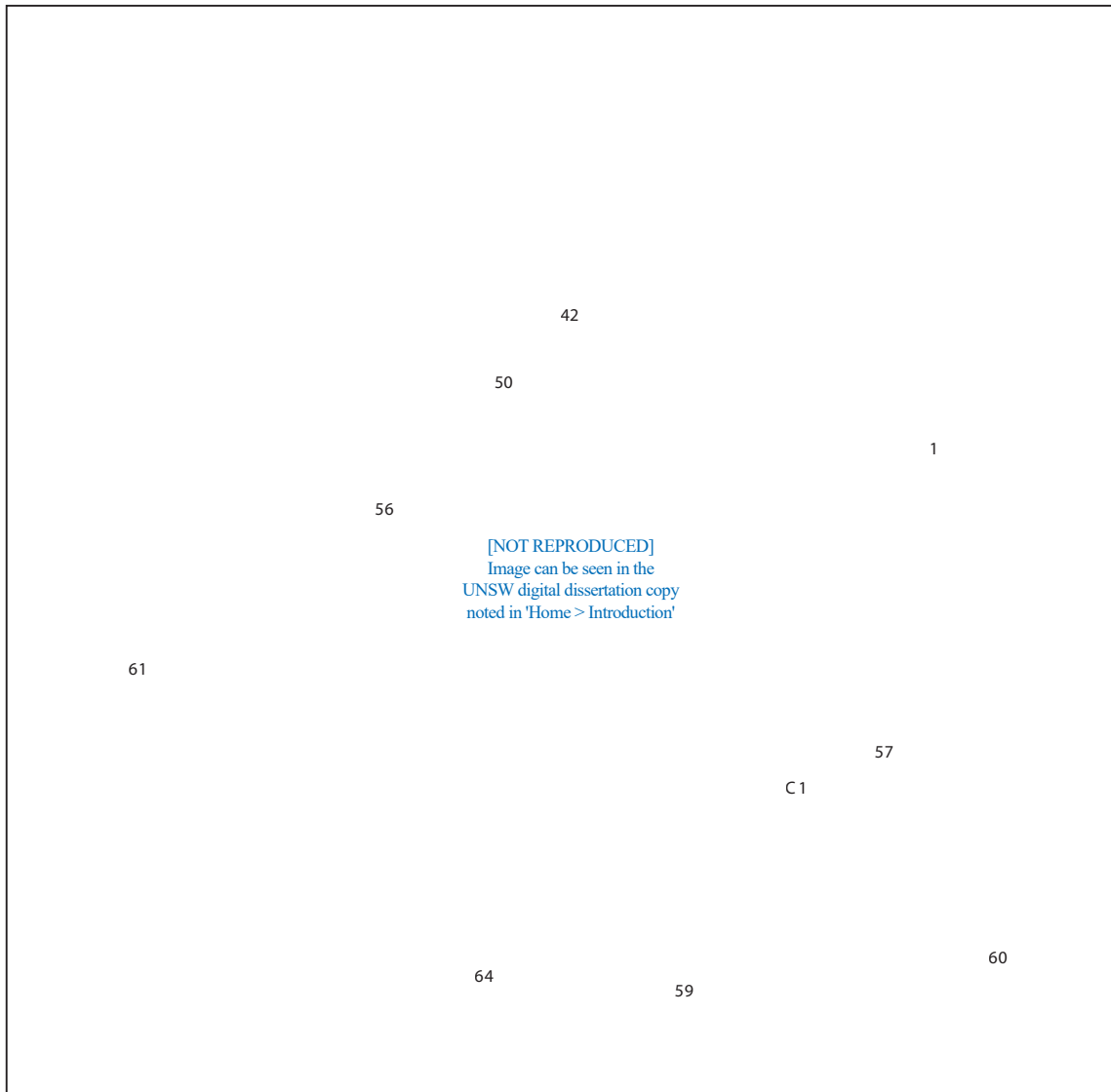
C3

Jean-Baptiste Langlacé, *Paris vu des hauters de Gentilly*, c.1815; oil on paper, 25.5 x 32.5 cm.
Musée Carnavalet, Paris (no.CAR P1714)
[for a reproduction, see: URL: <http://a80musees.apps.paris.fr/Portail/Site/Typo3.asp?lang=FR&id=accueil>]

[NOT REPRODUCED]
Image can be seen in the
UNSW digital dissertation copy
noted in 'Home > Introduction'

C4

Sigismond Himely, *Paris: Vue prise de la Glacière*, c.1840; aquatint, 51.5 x 67.5 cm.
Musée Carnavalet, Paris (1992 CAR 1128NB).
[for a reproduction, see: URL: http://www.arcadja.com/auctions/en/himely_sigismond/artist/57392/]

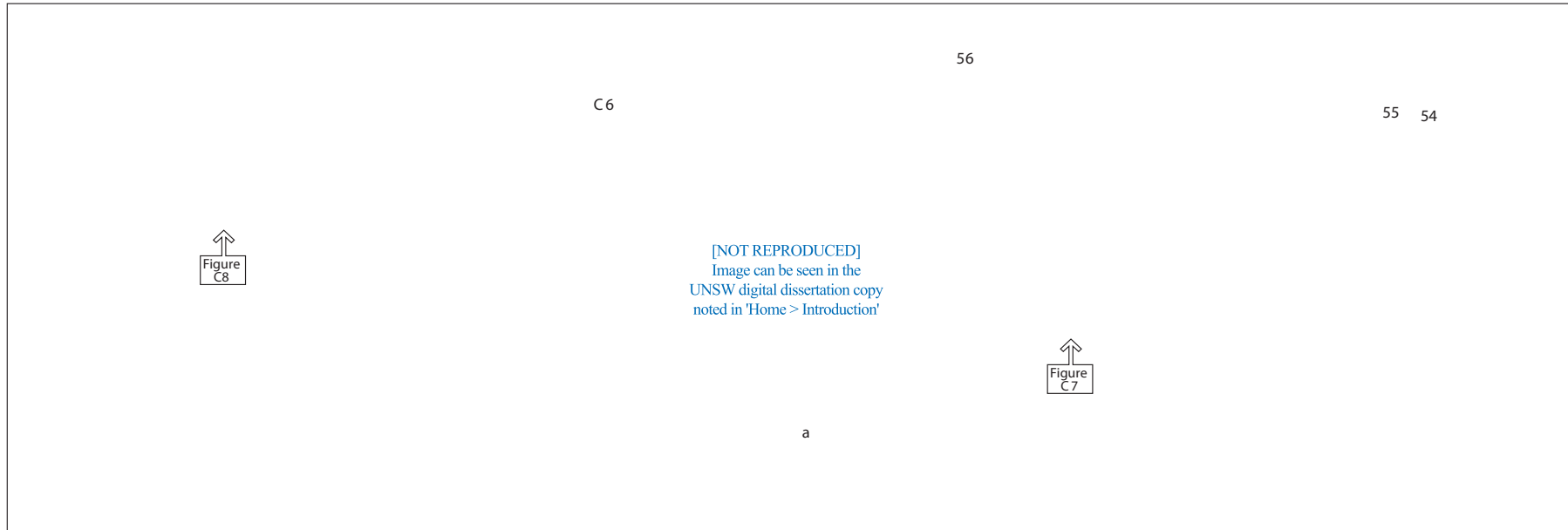
**C5**

Victor Navlet, *Le XIIIe vu d'une Montgolfière*, 1855; detail. Musée d'Orsay, Paris
(Inv. no. 20094)

[for a reproduction of complete painting, see:

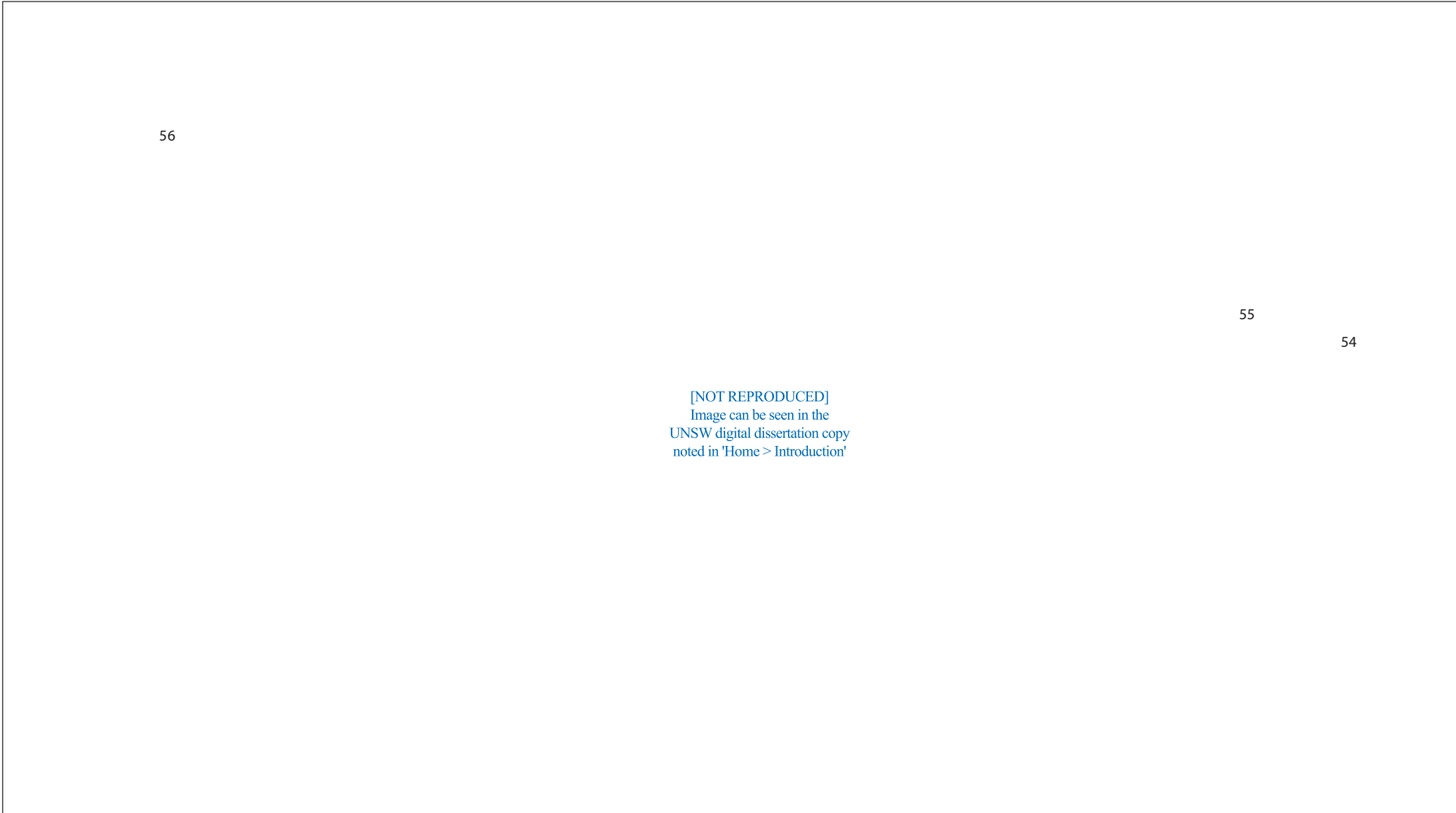
URL: <http://www.musee-orsay.fr/en/collections/index-of-works/>]

-
- 1 Seine River
 - 42 Cathédrale Notre-Dame
 - 50 Panthéon
 - 56 Val-de-Grâce
 - 57 Manufacture des Gobelins
 - 59 Bièvre: two arms of river
 - 60 Butte-aux-Cailles
 - 61 Observatoire
 - 64 La Glacière
 - C1 Bièvre domain



C6
Anon., *View to south from the Panthéon*, 1878; composite photograph.
Bibliothèque historique de la Ville de Paris, Paris

-
- 54** Saint-Jacques-du-Haut-Pas
 - 55** Orme de Sully:
Institut des Sourds-muets
 - 56** Val-de-Grâce
 - C6** Chimney stack 1
 - a** Rue d'Ulm



56

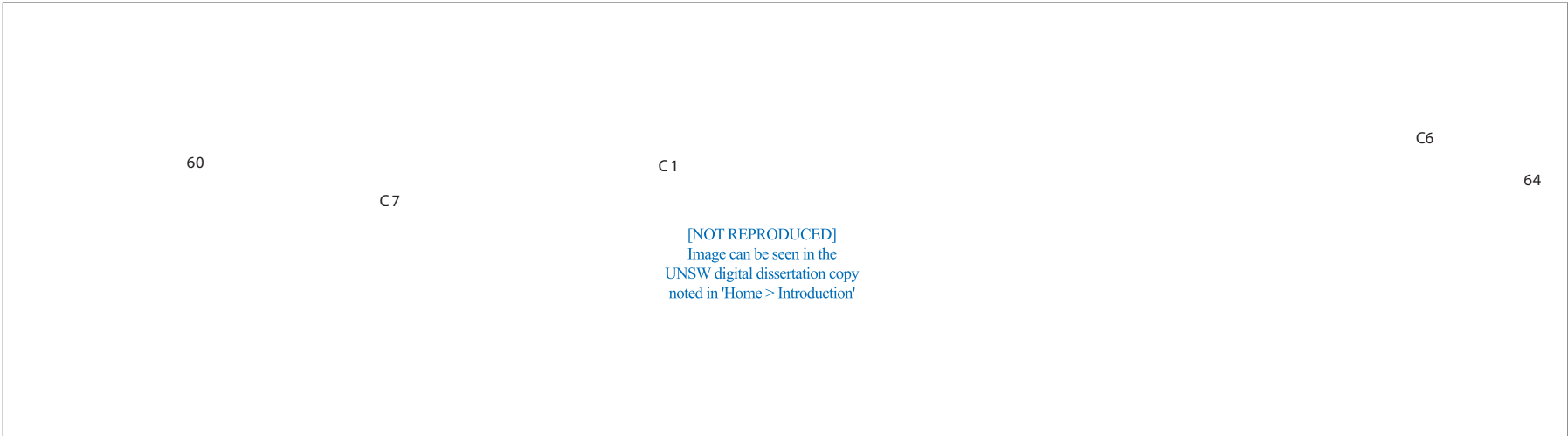
55

54

[NOT REPRODUCED]
Image can be seen in the
UNSW digital dissertation copy
noted in 'Home > Introduction'

C7
View to south from the Panthéon, 1878; detail of photograph, Fig.C6.
Bibliothèque historique de la Ville de Paris, Paris

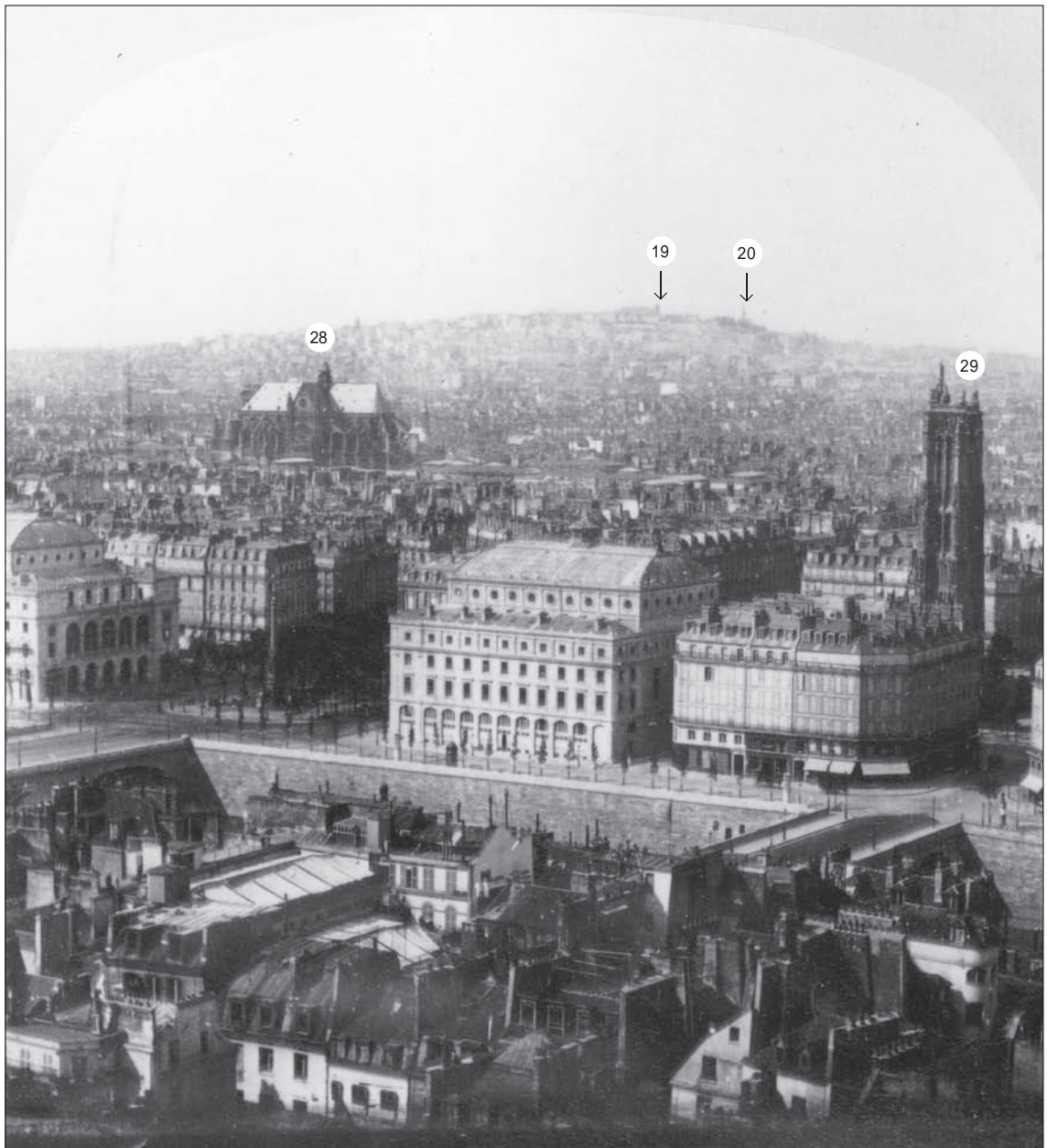
-
- 54** Saint-Jacques-du-Haut-Pas
 - 55** Orme de Sully:
Institut des Sourds-muets
 - 56** Val-de-Grâce



C8

View to south from the Panthéon, 1878, detail of photograph, Fig.C6.
Bibliothèque historique de la Ville de Paris, Paris

-
- 60** Butte-aux-Cailles
 - 64** La Glacière
 - C1** Bièvre domain
 - C6** Chimney stack 1
 - C7** Chimney stack 2



C9
Anon., *View of Paris to north from Notre-Dame*, n.d.; stereoscopic photograph.
Bibliothèque nationale de France, Paris

-
- 19 Saint-Pierre-du-Montmartre
 - 20 Tour Solférino
 - 28 Saint-Eustache
 - 29 Tour Saint-Jacques



C10
Roof of Saint-Étienne-du-Mont, detail of photograph, Fig.106

-
- 50 Panthéon
 - 51 Saint-Étienne-du-Mont
 - 52 Tour de Clovis
 - 56 Val-de-Grâce

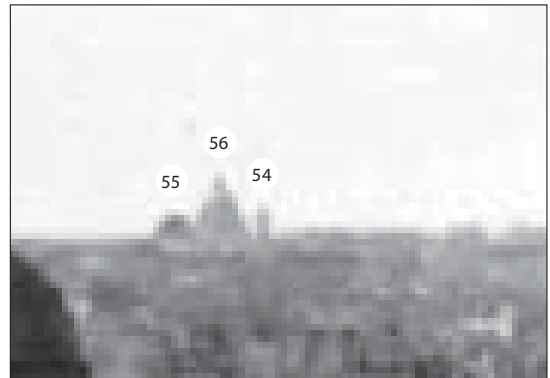


C11
Anon., *View from Rue du Champ de l'Alouette*, n.d. (c.1860?);
stereoscopic photograph. Bibliothèque nationale de France, Paris

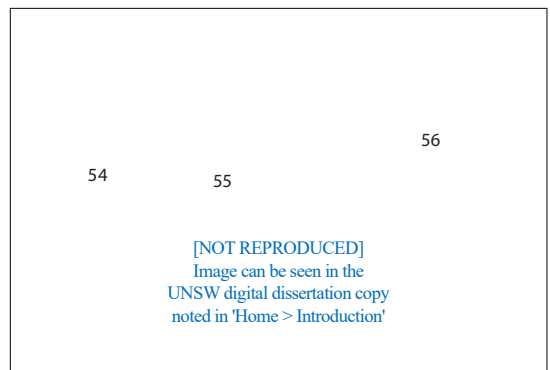
-
- 54 Saint-Jacques-du-Haut-Pas
 - 55 Orme de Sully
 - 56 Val-de-Grâce
 - C1 Bièvre domain



C12
 Anon., *Orme de Sully*, n.d.; wood engraving, publication details unknown. Bibliothèque nationale de France, Paris



C13
Orme de Sully, 1845; detail of daguerreotype, Fig.105

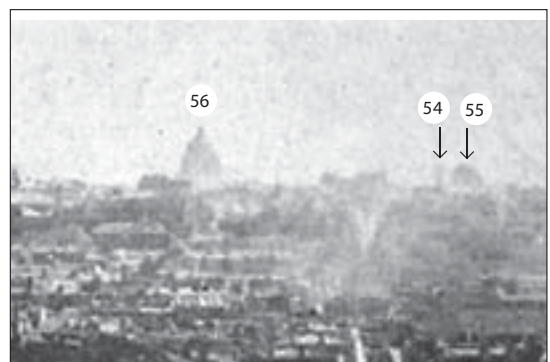


C14
Orme de Sully, 1855; detail of calotype, Fig.108



C15
Orme de Sully, detail of photograph, Fig.B6

- 54 Saint-Jacques-du-Haut-Pas
- 55 Orme de Sully
- 56 Val-de-Grâce



C16
Orme de Sully, 1868?; detail of photograph, Fig.107